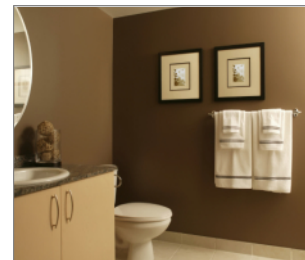


## SM Interaset

Interaset fixing for permanent anchorages in cavity walls. Zinc-plated metal fixing with metric screw



### Product information

#### Features and benefits

- Due to extensive range the SM INTERSET is suitable for board building materials with a thickness 2-38mm, it allows for a number of different applications.
- The fixing can be installed using normal screwdriver, or installation pliers.
- One piece stamping, with integral thread and flange for increased reliability.
- Hinged legs designed to maximise load-bearing capacity
- Large contact area of expanded arms increases load-bearing capacity and security.
- Integral anti-rotation lugs
- Fixtures can be removed and re-fitted.
- Combination head screw supplied

#### Applications

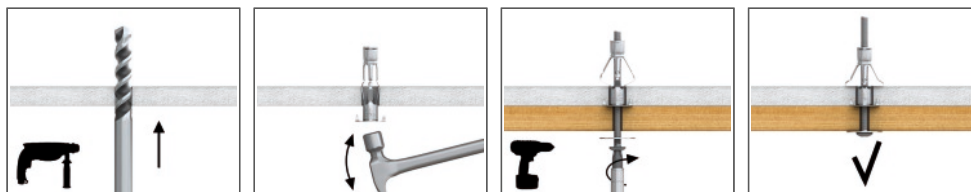
- Shelves and bathroom accessories on standard plasterboard
- Radiators and kitchen cabinets on double thickness and tiled plasterboard
- Pictures
- Lamps
- Towel rails
- Curtain rails
- Mirrors

#### Base materials

##### Suitable for use in

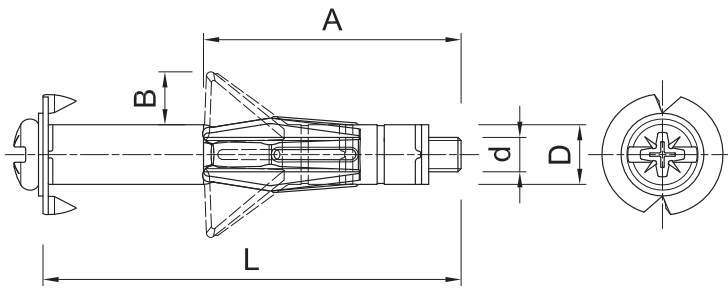
- Plasterboard
- Gypsum Fibreboards
- Chipboard
- Oriented Strand Board

### Installation guide



1. Drill a hole of required diameter.
2. Insert the fixing into the hole. Tap in lightly, ensuring that the anti-rotation lugs penetrate the face of the base material
3. With the hole drilled and the fixing inserted, the setting tool or screw driver is used to pull the screw head, thus expanding the fixing body

**Product information**



Product Code	Bolt		Steel sleeve			Fixture	Substrate thickness, min.	Fixture
	Diameter	Length	Diameter	Minimum clearance		Hole diameter		Max. thickness
	d	L	D	A	B	d <sub>f</sub>	t <sub>fix</sub>	
[mm]								
R-SM-04020	4	20	7	16	5	7	4	10
R-SM-04032	4	32	7	25	7	7	9.5	15
R-SM-04038	4	40	7	25	8	7	12	17
R-SM-04046	4	54	7	26	7	7	19	17
R-SM-04059	4	66	7	16	8	7	32	16
R-SM-05037	5	40	9	27	9	9	9.5	17
R-SM-05052	5	52	9	40	13	9	9.5	23
R-SM-05065	5	65	9	38	15	9	24	23
R-SM-06037	6	37	11	27	8	11	9.5	18
R-SM-06052	6	52	11	38	13	11	9.5	23
R-SM-06065	6	65	11	38	13	11	24	23
R-SM-06080	6	80	11	40	12	11	36	25
R-SM-08080	8	95	13	42	12	13	36	25

**Installation data**

Size			M4	M5	M6
Hole diameter in substrate	d <sub>0</sub>	[mm]	8	10	12
Min. spacing	s <sub>min</sub>	[mm]	25	25	25
Min. edge distance	c <sub>min</sub>	[mm]	25	25	25
Min. substrate thickness	h <sub>min</sub>	[mm]	-	9.5	9.5

**Product commercial data**

Size	Product Code	Substrate thickness, min. [mm]	Quantity [pcs]			Weight [kg]			Bar Codes
			Box	Outer	Pallet	Box	Outer	Pallet	
M4	R-SM-04020	4	100	3200	76800	0.56	18.0	463.0	5906675172323
	R-SM-04032	9.5	100	3200	76800	0.72	23.0	583.0	5906675172347
	R-SM-04038	12	100	1600	38400	0.87	13.8	362.2	5906675172361
	R-SM-04046	19	100	1600	38400	0.92	14.7	383.3	5906675004655
	R-SM-04059	32	100	1600	38400	1.18	18.9	482.6	5906675004662
M5	R-SM-05037	9.5	100	1600	38400	1.34	21.4	542.6	5906675172385
	R-SM-05052	9.5	100	1600	38400	1.67	26.7	671.3	5906675172408
	R-SM-05065	24	100	1200	28800	2.0	24.4	614.3	5906675172422
M6	R-SM-06037	9.5	100	1200	28800	1.76	21.1	536.9	5906675172446
	R-SM-06052	9.5	100	1200	28800	2.2	26.9	675.1	5906675172460
	R-SM-06065	24	50	600	14400	1.41	16.9	434.9	5906675172484
	R-SM-06080	36	50	600	14400	1.62	19.5	497.2	5906675004679

### Product commercial data

Size	Product Code	Substrate thickness, min. [mm]	Quantity [pcs]			Weight [kg]			Bar Codes
			Box	Outer	Pallet	Box	Outer	Pallet	
M8	R-SM-08080	36	50	600	14400	2.8	33.6	835.4	5906675158181